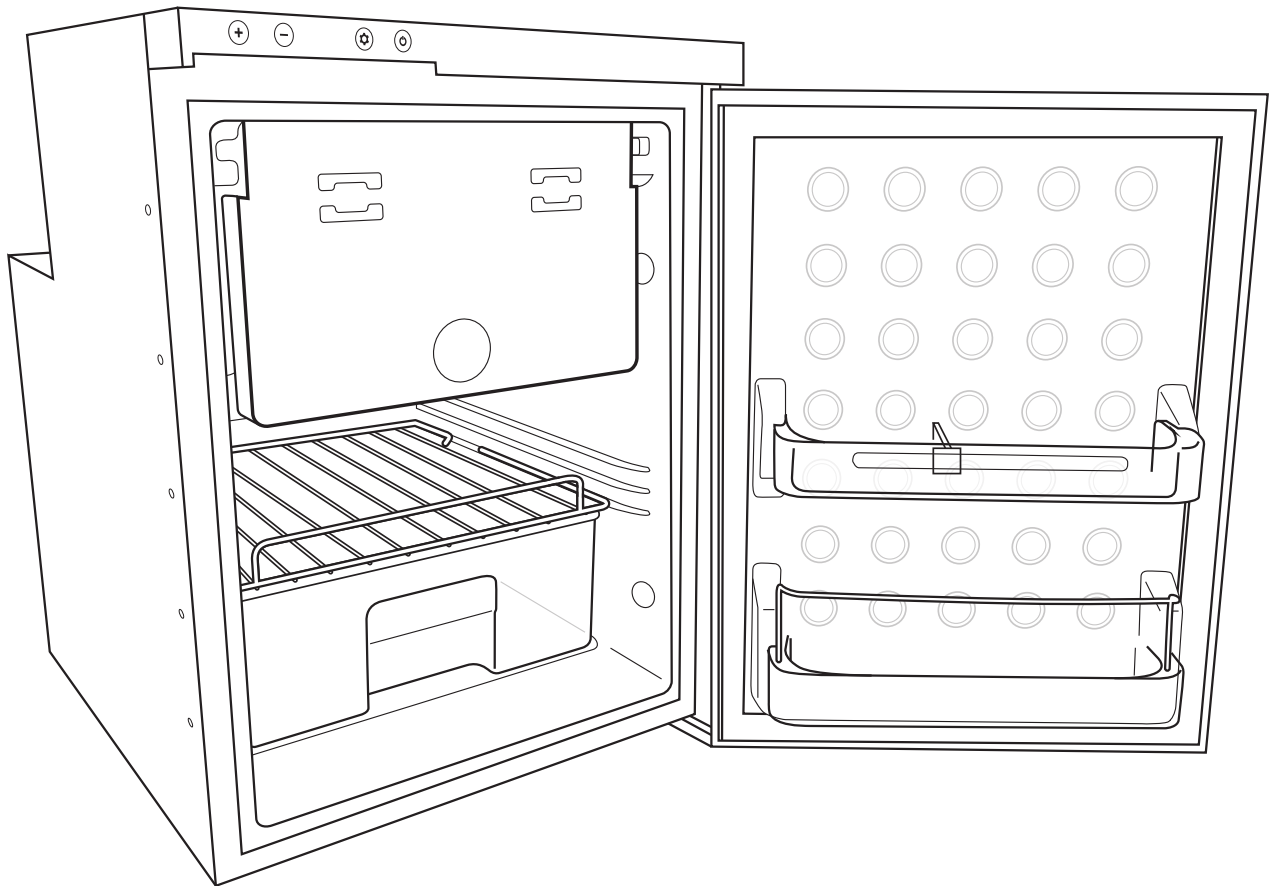


# **JKF50 FRIDGE FREEZER FITTING GUIDE**

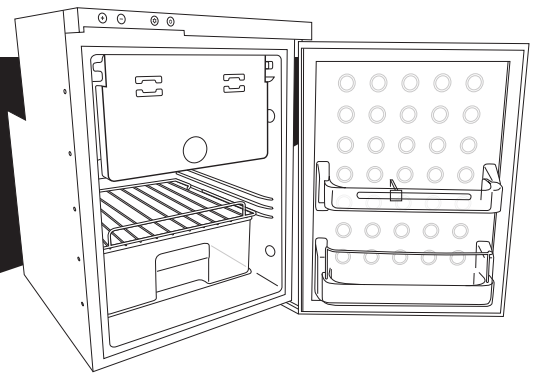


**INSTALLATION GUIDE**

**SWAPPING THE DOOR OPENING SIDE**

BUY ONLINE AT **JUSTKAMPERS.COM**

# JKF50 FRIDGE FREEZER FITTING GUIDE



## BEFORE INSTALLATION

01.



### Tools needed for installation

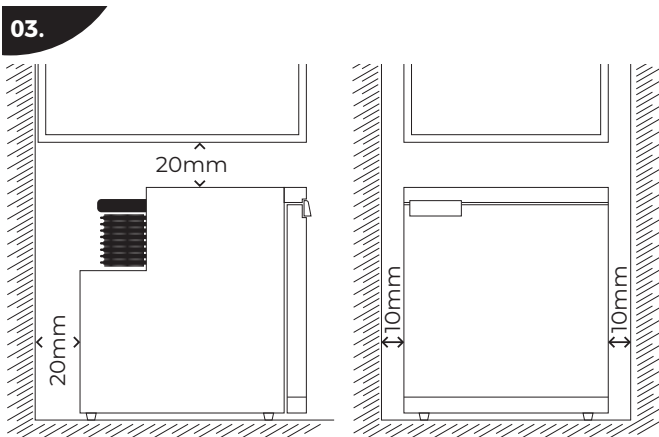
- Phillips Head Screwdriver
- Flat Head Screwdriver
- Heatshrink Connectors X2
- Crimping Tool
- Pliers
- Wire Cutters
- Tape Measure
- Wedges
- Drill (check your battery)
- Phillips head bit for your drill
- Screws (depth depends on your kitchen units) X4
- Something to protect your floor

02.



Carefully unpack your JKF50 fridge and check the unit for any damage.

03.



Before fitting, line the unit up and dummy fit to the space for the appliance. Remember to leave specified gaps to ensure cold temperature efficiency.



Ensure your JKF50 has been kept upright, on a level surface for 6 hours prior to installation.

04.

Check that the fridge door opens properly when in position, ensuring easy access and that you can remove the fridge/freezer divider, there is the option to change which side the door opens.



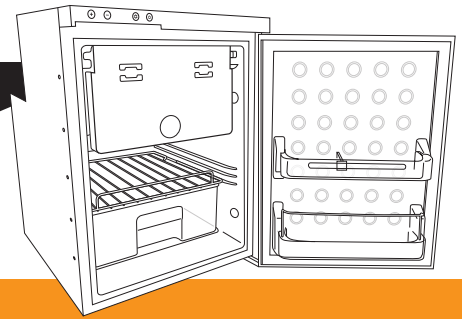
For more helpful Fitting Guides click here or visit [justkampers.com/articles/fittingguides/](https://www.justkampers.com/articles/fittingguides/)

During installation you might scratch the floor so ensure adequate protection is in place.

BUY ONLINE AT **JUSTKAMPERS.COM**

# JKF50 FRIDGE FREEZER FITTING GUIDE

## INSTALLATION



**BEFORE YOU INSTALL - Ensure the power is disconnected from your leisure battery.**

01.

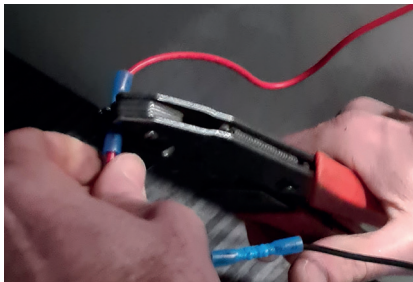


Remove the fuse from the fridge wiring.  
Cut the fridge wiring to a length that is manageable for the install.

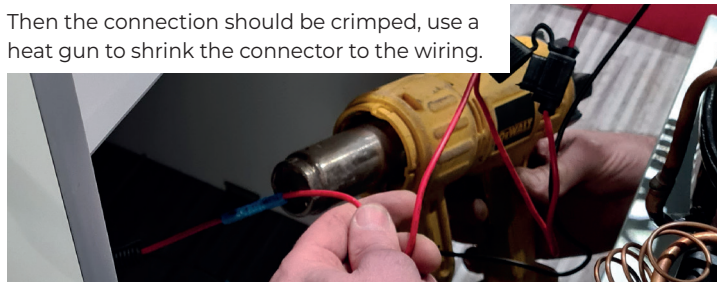
**CAUTION:** Make sure you have enough, you can always cut more!

02.

Connect the red (positive) wire from the fridge to the red (positive) wire from your leisure battery using heatshrink connectors.



Then the connection should be crimped, use a heat gun to shrink the connector to the wiring.



03.

**Repeat step 2 for the black (negative) wire from the fridge to the black (negative) wire from your leisure battery.**

Ensure the connections are tight so they won't disconnect over time with vibration.  
Pop the fuse back into the fuse holder on the fridge.

Connect the power to your leisure battery. Press the power button on the front of the fridge and it should power up.

04.



Position the fridge so that it is centred with specified ventilation gaps, be careful to keep the fridge upright and avoid trapping any wires.

Depending on your units you may need to pull the fridge forward to make sure the fridge door will open fully.



Once you are happy with the position use wedges to keep the fridge in place during the fixing.

You will see four bungs, two on each side of the fridge that need to be removed.

**Double check the fridge has not moved and the wedges are firmly in place to stop any movement during fitting.**

05.

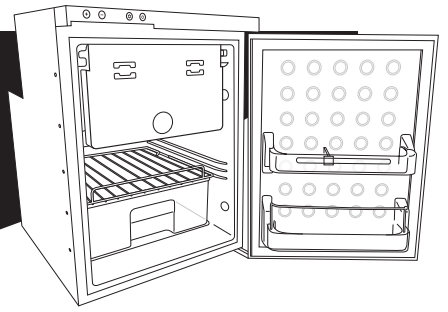
You can then screw the fridge into position.  
Make sure you have the correct length of screw depending on the thickness of your kitchen units and remember they will be recessed in the fixing holes.  
If not you could screw through your units and damage any laminate or finish.



Gently check the fridge is solid in its position.

**Your fridge is now installed and ready to enjoy.**

# JKF50 FRIDGE FREEZER SWAPPING THE DOOR OPENING SIDE



## DOOR REMOVAL

Take a few minutes to take a look at the fittings on each side (top & bottom) plus the handle on the door.

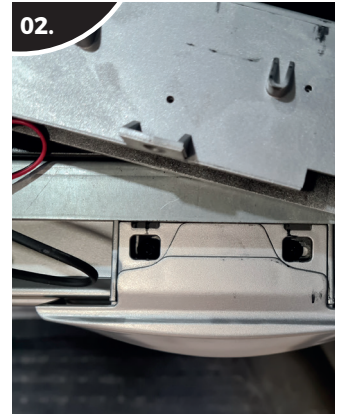


01.

Remove the top panel on the fridge by unscrewing the 3 screws on top of the control panel.



02.



Remove the handle mechanism from the door, there are two screws accessible from the top to do this.

03.



Remove the Blanker on the opposite side of the handle by removing the 3 screws holding the blanker in place from underneath

04.

Remove the 2 screws on the top hinge (right) side of the door.



Carefully put the fridge on it's back (The fridge will need to be left upright for at least 6 hours before being switched on)



05.



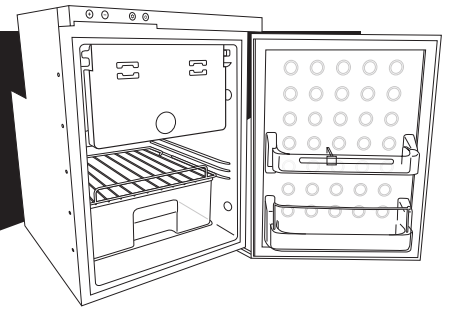
Remove the two screws on the hinge (right) side of the fridge.

06.



Remove the two screws on the left side of the fridge.

# JKF50 FRIDGE FREEZER SWAPPING THE DOOR OPENING SIDE



## DOOR REPLACEMENT

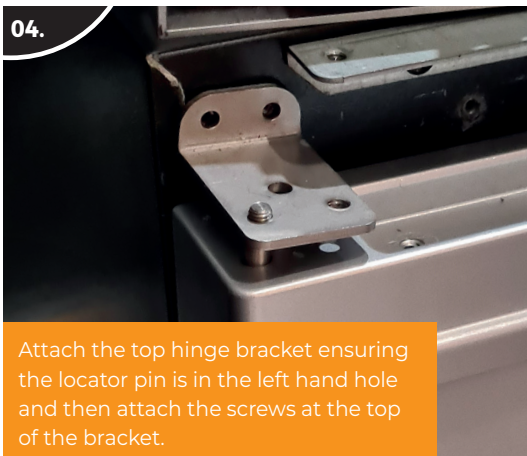


01. Attach the hinge bracket with the two screws to the left hand side of the base of the fridge.



02. Attach the non-hinge bracket with the two screws to the right hand side of the base of the fridge.

03. Return the fridge to the upright position and reattach the door at the base on the left using the locator pin.



04. Attach the top hinge bracket ensuring the locator pin is in the left hand hole and then attach the screws at the top of the bracket.



05. Now Refit the Top display panel by screwing the 3 top screws in and then the hinge screw underneath.



06. Reattach the blanker to the left side beneath the control panel using the 3 screws.



07. Attach the handle again to the right hand side using the 2 screws.

BUY ONLINE AT [JUSTKAMPERS.COM](http://JUSTKAMPERS.COM)