

SPORTSCRAFT SEAT SWIVEL

T5 2003-2015

JK part number: J18059

Note: If the seat swivel is being used with height-adjustable seats, the seats must be in the highest position before rotating. Before you start, check you have all the components.

Seat Swivel Plate

Handbrake Height Adjustment Bracket

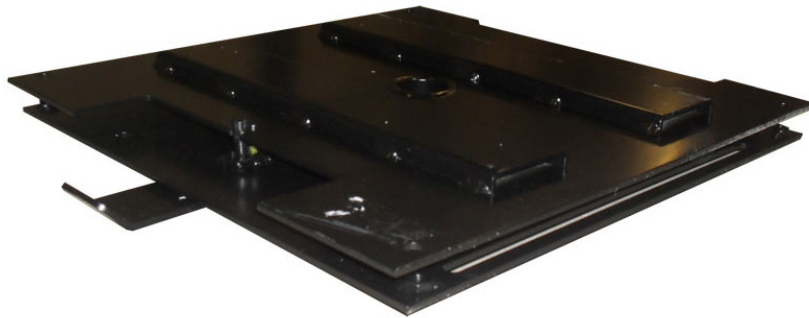
4 screws to EN ISO 4762 M8 x 20 10.9

2 screws to EN ISO 4762 M8 x 25 10.9

6 washers to ISO 7089 - 8.4 Part 3

2 nuts M8 Part 4

NOTE: The tightening torque for all screws M8



FITTING GUIDE

- 1.** Pull off the plastic panels of the seat box.
- 2.** Disconnect connectors for heated seats and / or airbag.
- 3.** Unscrew original seat with the seat runners from the seat box.
- 4.** Remove the plastic covering the handbrake lever.
- 5.** Loosen the handbrake from the seat box. (Drivers side only)

NOTE: If fitting the swivel to the drivers side, you must now fit the handbrake adaptor with the M8x20 screws, nuts and washers, then affix to the seat box.

N.B. Whilst every attempt is made to ensure that these instructions are as accurate and clear as possible, we cannot be held responsible for misinterpretation of these instructions or for any subsequent accident or damage caused through mis-fitted parts.

SPORTSCRAFT SEAT SWIVEL

T5 2003-2015

JK part number: J18059

6. After installing the adaptor, the handbrake cable will need to be retensioned as according to the vehicle manufacturers specification.
7. Mount the plastic lining of the handbrake lever again (some adjustments may need to be made to the plastic lining).
8. Mount the swivel plate using the original fixings.
9. Rotate the swivel 45° to allow easy fixing.
10. Carefully feed any heated seating/airbag cables through the hole in the swivel.



11. Mount the seat runners on the swivel, fix hand tight at first with the M8 x 20 screws.
12. Slide the seat forwards and fix the rear of the runners down.
13. Move the seat runners forwards and backwards several times to vensure they operate smoothly, then tighten all screws.
14. Connect the plug for heated seat / air bag.

N.B. Whilst every attempt is made to ensure that these instructions are as accurate and clear as possible, we cannot be held responsible for misinterpretation of these instructions or for any subsequent accident or damage caused through mis-fitted parts.