

INTERIOR CONVERSION KIT

SWB T4 1990-2003 - LEFTHAND LOADING

Part Numbers: J17027 fits T4 vans with Tailgate, J18074 fits T4 vans with Twin Rear Doors

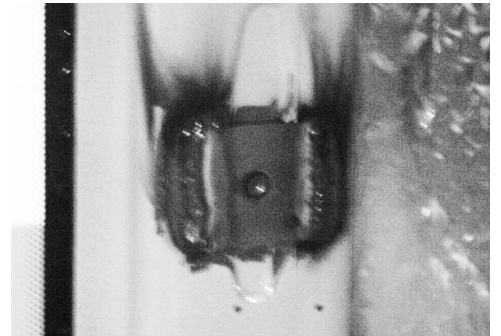
NOTE: This kit is designed to be used with vehicles that are fitted with two middle conversion windows J17094 & J17093. If you wish to use this on a four window van, the rear most panels can be cut to allow window fitment.

FITTING GUIDE

1. Rear seat belts

Before fitting the interior panels you may have some preparation to do to the vehicle shell.

NOTE: If you are fitting an 'original equipment' seat system or after market seats with factory fitted seat belts this step may not be relevant.



A. Captive nuts to be welded in place.

The van shell is fitted with provisioning for seat belt mounts but in most cases there are no fittings in place. On the C pillar there is an upper and lower mounting hole, these will require captive nuts to be welded in place (A)

On the upper side panels there is a witness mark indicating where the upper mount is located. Pilot drill this hole, then use a 15mm hole saw to make the required hole.

On the rear lower panel there is a second witness mark in the form of a slot. At either end drill a 15mm hole, then cut between the two holes using a sharp knife to score through the plastic.

N.B. Whilst every attempt is made to ensure that these instructions are as accurate and clear as possible, we cannot be held responsible for misinterpretation of these instructions or for any subsequent accident or damage caused through mis-fitted parts.

INTERIOR CONVERSION KIT

SWB T4 1990-2003 - LEFTHAND LOADING

Part Numbers: J17027 fits T4 vans with Tailgate
J18074 fits T4 vans with Twin Rear Doors

2. Floor

This kit is designed to be used with original equipment seat systems and most aftermarket seat rails. If you are not using a seat rail / floor system, you will need to build a raised floor with a total height of 26mm. When building the floor please remember to allow for the thickness of floor covering you will be using.

Within the kit we have supplied a cutting template for the floor area. We recommend making the floor in two pieces for ease of fitting. Before fitting, check the vehicle floor is level; if the floor is distorted this will need to be hammered flat before laying the floor.

Cut wooden battens to the desired length and bond these to the floor (B) using a bead of adhesive such as Sikaflex J18126. Once this has set, place the boards in the vehicle (C) with a 5mm spacing from the sides of the van, then screw the flooring directly to these.

NOTE: At this stage, you may need to take into consideration seat belt and bed / furniture mounting points. These need to be securely mounted to the vehicle structure not bolted to a wood floor.



B. Bond wooden battens to the floor.



C. Place boards in the vehicle.

N.B. Whilst every attempt is made to ensure that these instructions are as accurate and clear as possible, we cannot be held responsible for misinterpretation of these instructions or for any subsequent accident or damage caused through mis-fitted parts.

INTERIOR CONVERSION KIT

SWB T4 1990-2003 - LEFTHAND LOADING

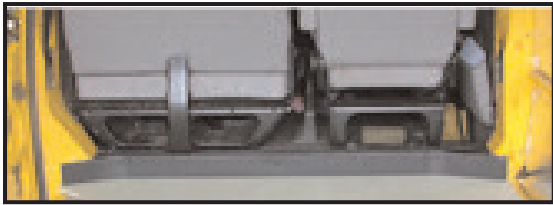
Part Numbers: J17027 fits T4 vans with Tailgate
J18074 fits T4 vans with Twin Rear Doors

3. Finishing strip

Once the floor is in place, you may wish to fit your covering. The next stage is to fit the trim panel that goes between the cab area and floor (D). If your van is fitted with a double passenger seat this will need to be lifted by 6mm to clear the trim panel. This can be done by placing washers on the fixing studs. Once done slide the centre trim behind the flooring and position the two end pieces. Centralize the centre, press down and fix in place using the self tapping screws.

4. Insulation

We recommend you insulate the your vehicle to control the temperature and to help cut down on road noise. There are numerous products on the market to help carry out this job.



D. Trim panel between the cab and floor

5. Remove board & cut carpet

Before fitting the panels we recommend you lay the floor covering that you intend to use.

To ensure a good fit, remove the floor panels and lay on the flooring in reverse (E), cut around the outer edge, this should give you an accurate piece. Replace the flooring and secure with either glue or a suitable double sided tape.

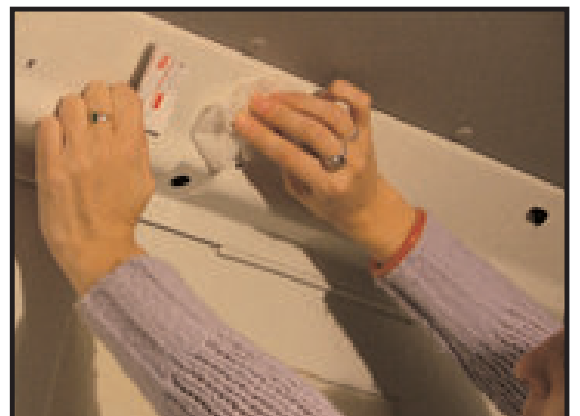


E. Lay the floor boards on the flooring in reverse

6. Cleaning

It is important that the vehicle is properly prepared to allow the Velcro pads to stick.

Before cleaning we advise that the top rails (cant rails) are cleaned with hot soapy water. Once dry, wipe the cant rails with the surface cleaning tissues provided (F). Wipe in one direction only to prevent re-contaminating the panel. Allow the cleaner to evaporate before attaching the panels.



F. Wipe cant rails with surface cleaning tissues

N.B. Whilst every attempt is made to ensure that these instructions are as accurate and clear as possible, we cannot be held responsible for misinterpretation of these instructions or for any subsequent accident or damage caused through mis-fitted parts.

INTERIOR CONVERSION KIT

SWB T4 1990-2003 - LEFTHAND LOADING

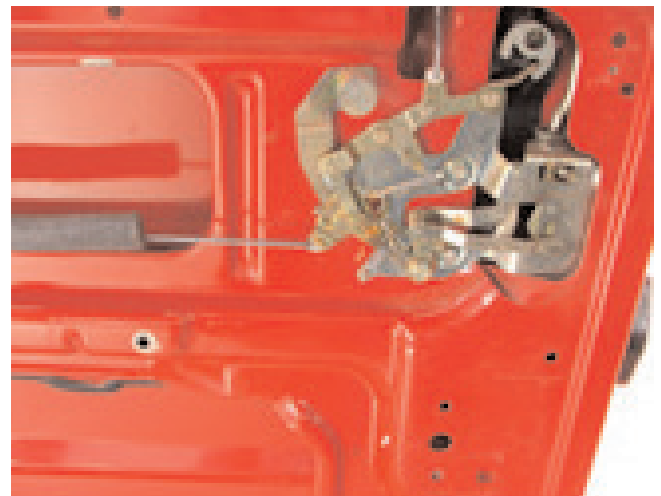
Part Numbers: J17027 fits T4 vans with Tailgate
J18074 fits T4 vans with Twin Rear Doors

7. Sliding door

To prevent the new door panel trapping the sliding door catch, the rod will need to be re-routed to run behind the inner door skin.



STEP 1: Remove the door rod from the front latch, this is



STEP 2: Remove the length of foam from the rod and discard. Fully open the sliding door and remove the door catch located at the rear door.



STEP 3: Pull the latch assembly out with the rod. Once the rod has cleared the inner skin, replace it so that the rod passes to the inside of the inner skin. Refit the rear latch.



STEP 4: Refit the rod to the front latch and reprofile so it clears the panel work. Open and shut the door several times to ensure the door closes correctly, if it does not catch every time, adjust the rod until correct.

N.B. Whilst every attempt is made to ensure that these instructions are as accurate and clear as possible, we cannot be held responsible for misinterpretation of these instructions or for any subsequent accident or damage caused through mis-fitted parts.

INTERIOR CONVERSION KIT

SWB T4 1990-2003 - LEFTHAND LOADING

Part Numbers: J17027 fits T4 vans with Tailgate

J18074 fits T4 vans with Twin Rear Doors

8. Front seat belts

DRIVERS SIDE

1. Remove the top seat belt bolt.
2. Remove the lower seat belt bolt.
3. Remove the seat belt slider knob.
4. Remove the cover retaining screw.



5. Remove the discard the inertia reel cover.

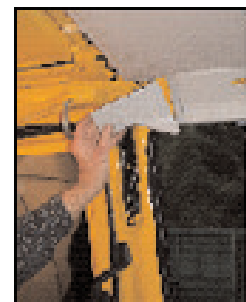
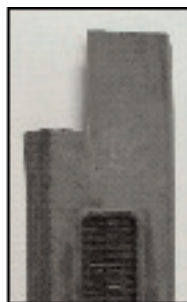
PASSENGER SIDE

On the passenger side you need to carry out the procedure as above but you will also need to pull back the sliding door rubber.

The upper cover needs to be modified to clear the new trim panel. Once this is removed you will need to cut out the top left corner, measure down 25mm from the top and 15mm in from the side. Refit leaving

9. Rear light covers

You will need to remove the upper rear headliner trims on both sides, then remove and discard both left and right rear light covers.



N.B. Whilst every attempt is made to ensure that these instructions are as accurate and clear as possible, we cannot be held responsible for misinterpretation of these instructions or for any subsequent accident or damage caused through mis-fitted parts.

INTERIOR CONVERSION KIT

SWB T4 1990-2003 - LEFTHAND LOADING

Part Numbers: J17027 fits T4 vans with Tailgate
J18074 fits T4 vans with Twin Rear Doors

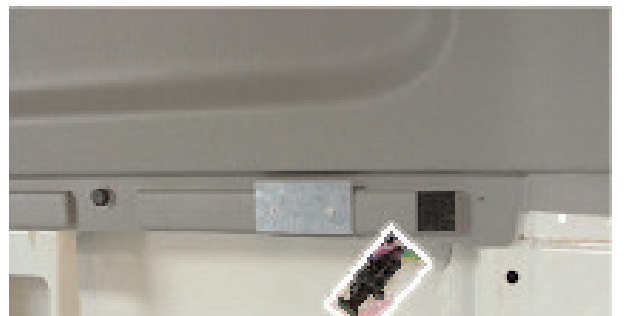
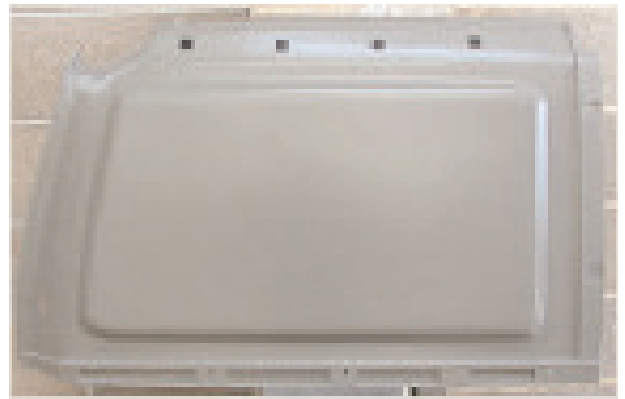
10. Fixing the panels

DOUBLE DOOR VEHICLES

If you have double rear loading doors you will need to prepare the panels to allow for hinge clearance and the wiring loom. On the rear lower panels there is a raised area that is pre-marked to show where the hinge stay is sited, this needs to be removed to allow for clearance. On the rear edge of the upper panels there is a witness mark for the wiring loom. This also needs to be removed to allow the harness to pass through.

On the three upper panels there are a series of witness marks in the form of a square with a cross in the middle. These need to have one side of Velcro pad stuck in the middle of each one.

Once these are in place attach the other part of the Velcro pad to the face of these. The top of the panel is fixed to the vehicle with these pads. The lower part of the panel is held in place with the plastic fixing screws provided.



N.B. Whilst every attempt is made to ensure that these instructions are as accurate and clear as possible, we cannot be held responsible for misinterpretation of these instructions or for any subsequent accident or damage caused through mis-fitted parts.

INTERIOR CONVERSION KIT

SWB T4 1990-2003 - LEFTHAND LOADING

Part Numbers: J17027 fits T4 vans with Tailgate
J18074 fits T4 vans with Twin Rear Doors

Check the panel fits to the side of the vehicle before removing the protective strip. When happy remove the strip and attach the panel. Using the back of your hand, thump the panel inwards in the area of the pad to ensure a good bond.

The pads will take up to 72 hours to achieve full adhesion. Once this time has elapsed the panels can be removed if required, leaving one half of the Velcro pad attached to the rail. Once in place fit the lower plastic retaining screws to the base of the panel.

Repeat on the centre window panel and the upper nearside rear. On the nearside rear panel you will see a screw hole on the top right of the panel. Pilot drill through this into the upper rail and fit the self tapping screw provided.



The lower panels can now be put in place, locate the bottom lip under the floor edge and press into place. The top edge of the panel will fit to the Velcro pads and locate in the pre-drilled holes with the clips provided. On the rear nearside panel there are two screw holes on the front edge. Drill a pilot hole through the pre made hole in the panel and screw in place using the screw provided. The offside front lower panel also includes the B post. Once this is in place, refit the seat belt and check that the door seal is in place over the lip. At the top of this panel, replace the fitting screw from the previously removed seat belt cover and refit the belt and adjuster.



N.B. Whilst every attempt is made to ensure that these instructions are as accurate and clear as possible, we cannot be held responsible for misinterpretation of these instructions or for any subsequent accident or damage caused through mis-fitted parts.

INTERIOR CONVERSION KIT

SWB T4 1990-2003 - LEFTHAND LOADING

Part Numbers: J17027 fits T4 vans with Tailgate
J18074 fits T4 vans with Twin Rear Doors

11. B post

If the upper B post is to be fitted with a grab handle, drill the pre-marked holes before fitting. This will locate in the pre-drilled holes. Once in place, replace the fitting screw from the previously removed seat belt cover.

The lower B post can now be fitted. Slide behind the floor panel and step, then locate in the pre-drilled hole. Refit the sliding door rubber along the outer edge and refit the seat belt.



12. Sliding door top

The sliding door top panel fits in the same manner as the other panels. Fix the Velcro tabs to the panel using the location marks, remove the backing and push into place.

At the front edge drill a pilot hole through the pre-made hole in the panel and screw in place using the provided screw, finish with the coloured cap.



N.B. Whilst every attempt is made to ensure that these instructions are as accurate and clear as possible, we cannot be held responsible for misinterpretation of these instructions or for any subsequent accident or damage caused through mis-fitted parts.

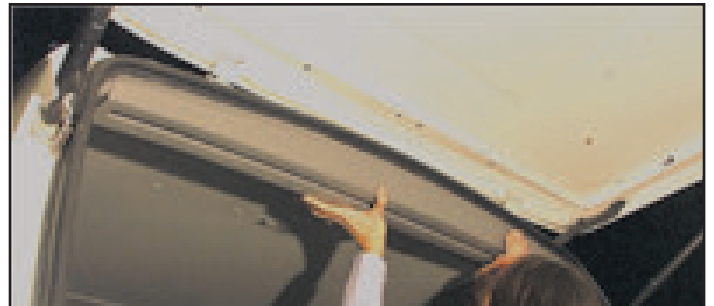
INTERIOR CONVERSION KIT

SWB T4 1990-2003 - LEFTHAND LOADING

Part Numbers: J17027 fits T4 vans with Tailgate
J18074 fits T4 vans with Twin Rear Doors

13. Tailgate panel

Fix the tailgate panel in the same manner as the outer panels making sure the outer lip of the panel fits under the real seal. Once in place drill a pilot hole through the pre-made hole in the panel and screw in place using the screw provided, finish with the coloured caps.

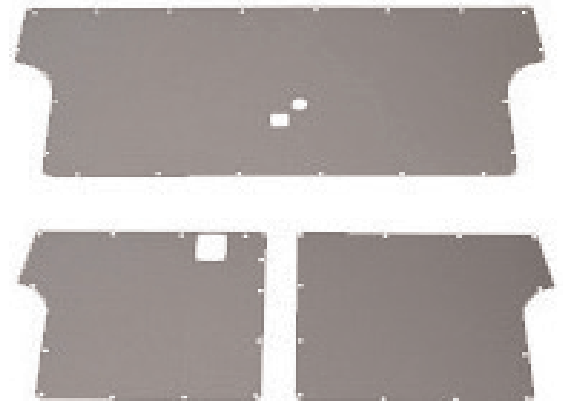


14. Rear door panels

To fit the rear floor retaining panel, remove the two bolts that hold the catch in place and remove the factory trim piece (if fitted). On the panel there are witness holes that correspond to the catch plate. Drill these out as required.

Place the panel in position and attach using the supplied screws. Once in place, re-fit the catch plate and check the tail gate seal is over the lip.

Fit the rear door panels using the original push in rivets. Replacement rivets are available (J18032).



15. Sliding door panel

With the sliding door slightly open, remove the lock knob. Place the door panel into position. Locate the fitted push rivets into the corresponding holes in the door frame.

Start pushing at the top right hand corner by the door handle, then move clockwise around the panel locating the rivets into the corresponding holes.

When you are happy they're in position, you can push the panel into place. Replace the lock knob.



N.B. Whilst every attempt is made to ensure that these instructions are as accurate and clear as possible, we cannot be held responsible for misinterpretation of these instructions or for any subsequent accident or damage caused through mis-fitted parts.

INTERIOR CONVERSION KIT

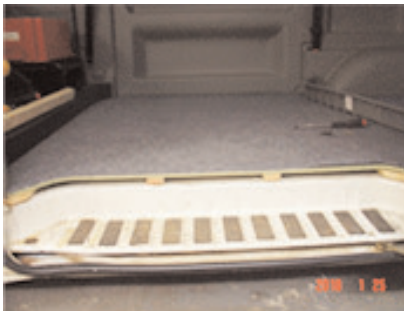
SWB T4 1990-2003 - LEFTHAND LOADING

Part Numbers: J17027 fits T4 vans with Tailgate
J18074 fits T4 vans with Twin Rear Doors

16. Step

To finish the floor area you will need to add a trim piece to the side loading door step, this you can trim in the same material as you have used on the floor or we can offer an optimal step insert, part number J18104.

To fit the step you will need to fit a couple of bitters similar to the floor. Once these are in place, remove the plastic clips from the step base and bond the trim piece into place.



17. Finished

To complete the installation, check around each door seal to make sure it is lipped over the interior panels.

Cleaning. After 72 hours the Velcro pads should be fully adhered to the inside of the vehicle, which will allow you to remove the panels if necessary for maintenance to the vehicle or cleaning. If the interior needs cleaning, we recommend wiping down with warm water and household soap.



N.B. Whilst every attempt is made to ensure that these instructions are as accurate and clear as possible, we cannot be held responsible for misinterpretation of these instructions or for any subsequent accident or damage caused through mis-fitted parts.